

Tottori City Information in July

Events

World Cooking Class (Korean Cuisine)

Date: July 19 (Sat)
10:00 ~ 13:00
Place: Tottori City
International Exchange Plaza
(1-chome Koyama-cho-nishi)
Instructor: Jung Hye Su
Capacity: 10 people
Participation fee: Free of charge (individual materials cost is required)



Where to call: Tottori City International Exchange Plaza 0857 - 31 - 3253

The 30th Anniversary Kawahara Town Sweetfish (Ayu) Festival

Date : July 26 (Sat) 13:00 ~ 21:00
(In the case of rain, event postponed)

Stage shows and live radio program in public will be held even if it rains.

Place: Kawahara Open Area by Sendai River

In the case of rain, the event will be held at the Kawahara Town General Gym.

Contents:

Opening, Sweetfish Harvest Festival "Salty Broiled Fish Corner", children's space, etc.

13:00 ~ 17:00

Catching sweetfish, children's drums, *yosakoi* dance, live stage, etc.

17:00 ~ 20:20 (19:00 ~ 19:55 *FM Sanin* live radio program in public)

Fireworks display (about 2,500 fireworks)

20:20 ~ 21:00 (expected time)

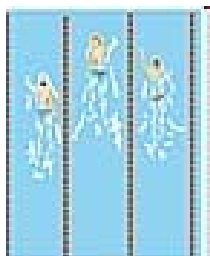
Where to call : Sweetfish Festival Planning Executive Committee (Kawahara Town Branch, Industrial Foundations Division)

0858 - 76 - 3118



Tottori City B&G Marine Center Pool Open

Date: July 1 (Tue) ~ August 31 (Sun)
9:15 ~ 12:00, 13:00 ~ 17:00
Fee: ¥ 310/Adult, free for high school students and under.



Where to call: Tottori City B&G Marine Center (Mitsu) 0857 - 28 - 5259

Tottori · Karo Port Oasis Summer Festival 2008!

Date: July 21 (Mon · Marine Day)
10:00 ~ 16:00

Place: Open area next to Kanikko-Kan

Contents: Change to board the ships "Hayabusa" "Torikaze",

seafood barbecue,

fish catching, flea market, etc.



Appointment is required for ship boarding, and ¥100 is required as an insurance fee. Please apply to the following contact info:

Where to call: NPO Tottori · Karo Port Oasis Office
090 - 4804 - 3710

National Holiday Garbage Collection Service (July)

July 21 (Mon) Marine Day	
Only applies to locations where garbage is collected on Monday.	
Burnable garbage Plastics Used papers	Will be collected
PET bottles	Will be collected on the 23rd (Wed)
Food trays Recyclables Non-burnable small rubbish	Will NOT be collected

Please take out garbage by 8 a.m.

In August, batteries are collected in Tottori area. Please don't put them in together with other garbage. Put them in transparent or semi-transparent bags, and take out them to the garbage station on the collection day for non-burnable small rubbish. Please put fluorescent tubes in original paper tubes of their purchase to avoid crushing them.



Night-Time and Holidays Emergency Clinic

(for internal medicine, pediatrics or minor injury)

Babies and infants are to be taken to hospitals on duty for children's emergencies.

Hours: 19 : 00 ~ 22 : 00 on weekdays

9 : 00 ~ 17 : 00 and 19 : 00 ~ 22 : 00 on Sundays and holidays.

Place: Emergency Clinic (Kyukan Shinryojo: next to Tobu Medical Association)

Where to call: Tobu Medical Association (Tobu Ishikai) (0857) 22-2782

For more information, please visit the Tottori City website

<http://www.city.tottori.tottori.jp/www/genre/0000000000000/1187677413718/index.html>

TIA was established in order to help improve the lives of foreign residents in Tottori. We are mainly engaged in translating various information materials for daily life as well as relevant interpretation. On top of that, we organize several exchange events every year with foreign residents, such as a tour around sightseeing spots in Tottori City.

If you need a translator or interpreter, want to learn Japanese, or have any trouble in your daily life, please feel free to contact TIA.

(Tottori International Activities NPO group).

TEL : 0857-27-4321 URL : <http://tia-link.com/jp/>



Tiara